

## FLAT POINT STAPLE

Two staples such as this one, Plate 2, or the square pointed one, and the gate hook shown on Plate 3, will always keep a gate closed. Try to figure the amount of stock required. You have half of a ring, two straight parts 1 inch long and two flat points. Read this entire page before you begin work.

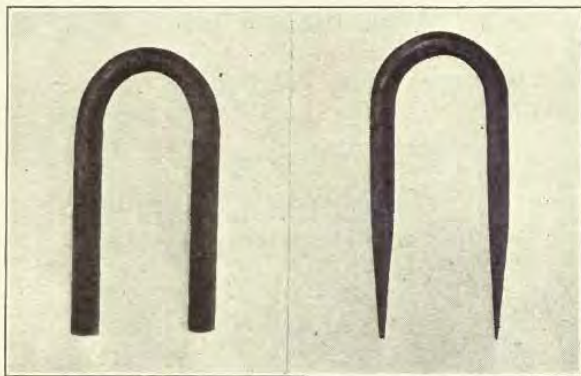


FIG. 15. SQUARE AND FLAT POINT STAPLES.

### How to Make the Flat Point Staple

1. Square both ends.
2. Heat and hammer, "draw," both ends to a chisel edge working back *from* the points until they are just  $1\frac{1}{2}$  inches long. Hammer on both sides of the prongs, and always keep the under side flat on top of the anvil. Be sure to keep the points  $\frac{1}{4}$  inch wide at the same time you are flattening them.
3. Bend at the center over the horn of the anvil as you did with the ring. Be sure to bend the points so that they take the position shown in Fig. 15 and Plate 2. Remember the two sides are just 1 inch apart all the way up.
4. Blacken.

## SQUARE POINT STAPLE

1. Square both ends.
2. "Draw" both ends to square points, drawing the extreme points first and working back to the required length.
3. Bend at the center over the horn of the anvil.
4. Check up on your dimensions with the drawing and blacken. Fig. 15 shows the completed staple.

*Notes.*—As small iron heats quicker than large be careful not to "burn" the points while the upper part of the staple is being heated.

Do not hammer very much on the curve of the staple or it will be flattened and become smaller than the other parts

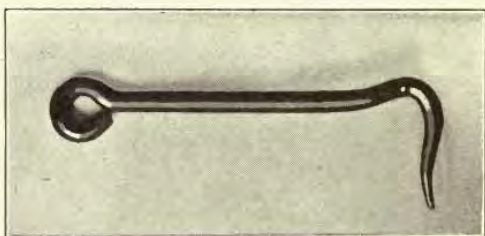


FIG. 16. GATE HOOK.

## GATE HOOK

This gate hook, Plate 3, is designed to be used with either of the staples shown on Plate 2.

## How to Make the Gate Hook

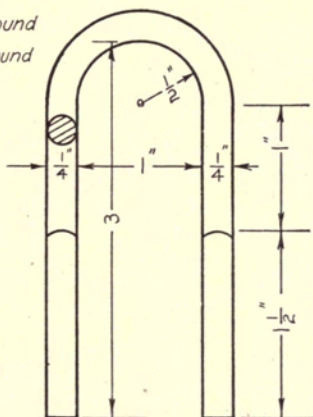
1. Square ends and mark dimensions with center punch or chisel.
2. Draw a square point (as on the square point staple)  $1\frac{1}{4}$  inches long working from the end of the stock backward. Hold with bolt tongs.
3. Round the point.
4. Bend the eye. Heat and clamp in the vise and hammer over the stock in the same manner as is shown for the hook in Fig. 17. Then bend over the horn of the anvil until the eye is shaped, as in Fig. 18.

# STAPLES

Stock

A -  $\frac{1}{4}$ " x  $5\frac{1}{2}$ " round

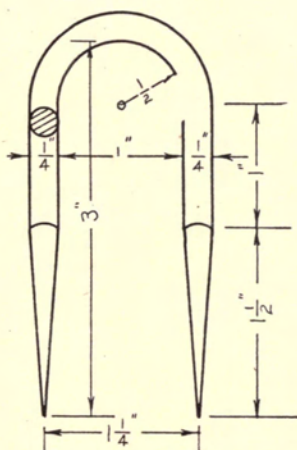
B -  $\frac{1}{4}$ " x  $5\frac{1}{2}$ " round



Front View

Side View

(A)  
Flat Points



(B)  
Square Points

UNIVERSITY OF CALIFORNIA

# FARM BLACKSMITHING

A TEXTBOOK AND  
PROBLEM BOOK FOR STUDENTS IN AGRICULTURAL  
SCHOOLS AND COLLEGES, TECHNICAL  
SCHOOLS. AND FOR FARMERS

BY  
JOHN F. FRIESE

Head of the Machine Shop and Forging Departments,  
Technical High School, St. Cloud, Minn.

*Author of "Blueprinting"*



THE MANUAL ARTS PRESS  
PEORIA, ILLINOIS

TO THE  
ADMINISTRATOR

TT220  
F7  
Vocat.  
educ.

*Vocational Educ. Division*

COPYRIGHT 1921

• JOHN F. FRIESE

Public Domain Bookmarks and Links  
Added by Allen Dyer. December, 2007  
Blacksmith Guild of Central Maryland  
Publications Committee

Printed in the United States of America